

MOVE IT[®]
Holland

**HEAVY DUTY
WIDE APPLICATIONS
HIGH CONFIGURATION**



**ELECTRIC WINCH WITH WIRELESS
REMOTE CONTROL**

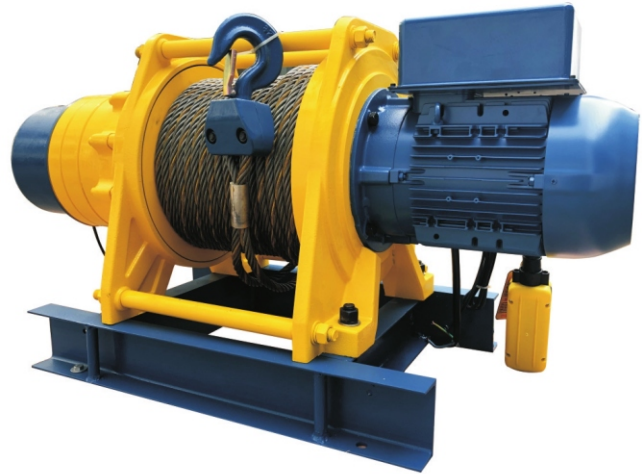
Model: MTS

1000KG, 1600KG, 2000KG & 3000KG

ELECTRIC WINCH WITH WIRELESS REMOTE CONTROL

Model: MTS

MOVE IT^{Holland} electric winch Model MTS are featured by solid structure and reliable working performance. The advanced design and high class spare parts adopted which make our products especially suitable for heavy duty working conditions and long working time. The mature and multiple configuration options allow our customers to flexibly choose the most suitable products they need.



Product Features

- ★ Excellent working performance, duty class up to Grade M5.
- ★ WEG Motors as the strategic supplier who provides high class electric motors for Wellman AMW winch.
- ★ 60m/100m, 100m/200m, 200/300m, and more options of rope length by customer's requirement.
- ★ Wide range voltage available. (220V/380V/440V, etc)
Dual voltage available. (220V/380V, 220V/440V)
- ★ High enclosure class IP55 for complete machine which allow to use outside environment.
- ★ Solid and ergonomic design pendant control as standard.
With IP65 protection and Emergency-Stop button for safety.
- ★ Wireless remote control is optional by customer's requirement.
- ★ Easy maintenance & Less cost.



HEAVY DUTY

Excellent duty class performance allow extremely heavy duty and longer routine working hours.



HIGH EFFICIENCY

Adoting compact and solid planetary transmission system which can conduct high mechanical efficiency.



LONG LIFESPAN

High duty classification for long lifespan of the complete winch. Vital parts with extremely long service life.



SAFETY THOUGHTFUL

Thermal overload protect device, 24V low voltage control circuit as standard for safety concerns. More safety devices are optional.



LOW NOISE

The planetary transmission system and its gears group with high precision processing, smooth running and low noise level.

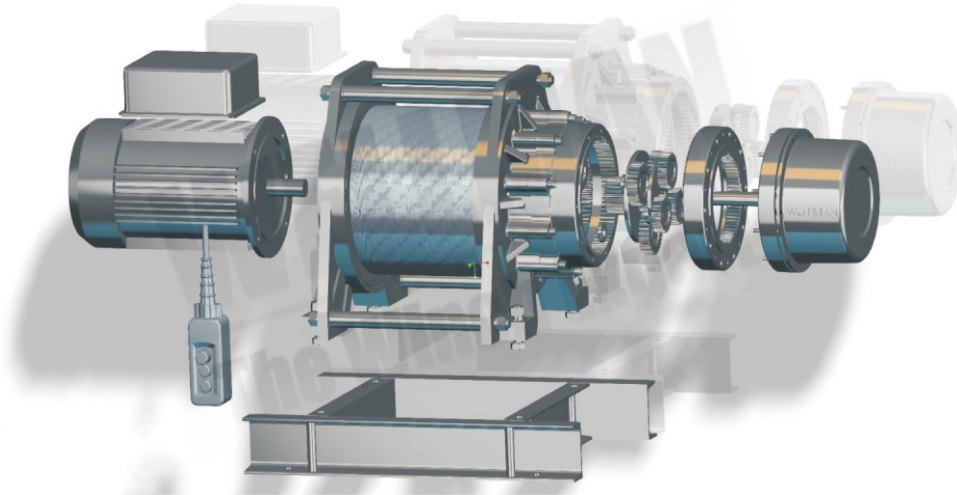


EASY MAINTENANCE

Less even free maintenance vital parts such as motor, gearbox and brake. Less cost on investment.

CONFIGURATION & OVERVIEW

Model: MTS



Power Mechanism

We select world famous brand motor for excellent working performance on site. Enclosure reach to IP55 high protection class. With high efficient cooling fan for good heat dissipation.



Transmission System

Adopting planetary gears system for outstanding efficiency, high safety and long lifespan. Gears groups with precise processing, smooth running, durable wearproof and low noisy.



Brake System

We adopt electro-magnetic disc brake for strong and reliable working performance. The brake can output strong and enough braking force instantly for safety. Less maintenance is required, and with long service lifespan.



Wire Rope and Drum

High tensile strength wire rope with 1770MPa for high working and safety performance. Rolling on seamless steel drum which made of Q345(Fe52) class steel materials.



Electronics Parts

We select world famous brand electronics only for safety and stable working performance. Electronics are well and clear assembled in high enclosure control panel, with clean layout of wiring and circuit.



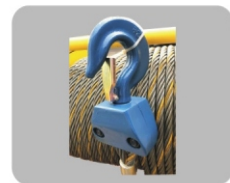
Pendant & Remote Control

Solid and ergonomic pendant as standard operation controller. The pendant control with IP65 high enclosure and protection class which can be used outside directly. Remote control is available as an extra options for customers.



Foot Mounting

A strong base which is made by steel for foot mounting on ground, concrete or other places. The base can enhance the connecting strength of winch structure. With handles on both sides for easily carrying and moving.



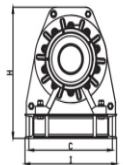
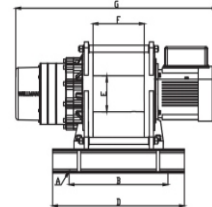
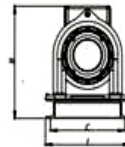
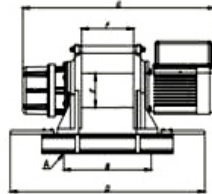
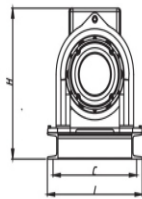
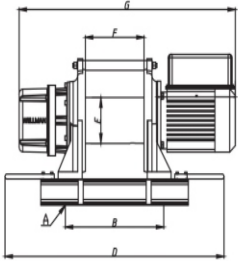
Load Hook

DIN standard high grade load hook which forged by high strength alloy material, with special design hook shell for iconic looking and high working performance. Hook latch installed on each hook for safety concern.

ELECTRIC WINCH WITH WIRELESS REMOTE CONTROL

Model: MTS

1000KG, 1600KG, 2000KG & 3000KG



MTS1000

MTS1600

MTS2000 & MTS3000

Model	Technical Parameters							
	Capacity	Rope Length (standard / Max.)	Rope Diameter	Working Speed	Motor Power	Power Supply	Phase	Net Weight
MTS1000	1000kg	100m	11mm	13~19m/min	3.0Kw	380V	3 Phase	184Kg
MTS1600	1600kg	100m	13mm	13~19m/min	4.0Kw	380V	3 Phase	185Kg
MTS2000	2000kg	150m	16mm	9~14m/min	5.5Kw	380V	3 Phase	493Kg
MTS3000	3000kg	200m	18mm	9~14m/min	7.5Kw	380V	3 Phase	672Kg

Model	Basic Dimensions(mm)								
	A	B	C	D	E	F	G	H	I
MTS1000	4-Φ13	400	340	890	140	238	880	460	386
MTS1600	4-Φ13	400	340	890	140	238	880	460	386
MTS2000	4-Φ18	600	510	800	180	310	1225	655	565
MTS3000	4-Φ18	700	510	900	180	410	1365	655	565