

Push Trolley



These hand-operated manual trolleys are divided into two types: push trolley and geared trolley.

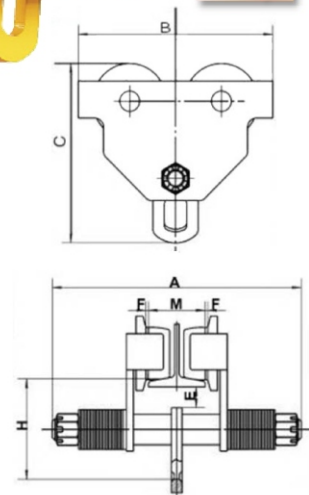
Push trolley is operated by pushing the load lifted, geared trolley by pulling the hand chain. Both of these items are running on the bottom of I-beam and can be also attached with hoist to become a conveyor system.

Features

- » Compact design and easy assembly.
- » Can be installed or removed at any point along the track, also additional uses with hoist or other lifting tools to improve efficiency and labor-saving.
- » Adjustable to suit H and I beam flanges with various widths.
- » Drop-forged steel wheels for strong and lower wear.
- » Built-in lugs prevent falling and act as bumper guards.
- » Ball surface wheel designed to establish centered contact with beams for running along universal tracks, and for distributing load away from beam flanges to reduce flange stress.
- » Used on straight or curved track.
- » Fitting for special beam widths is available.
- » As per Machinery Directive 2006/42/EC and standard EN 13157+A1:2009.



Model:
MT₁



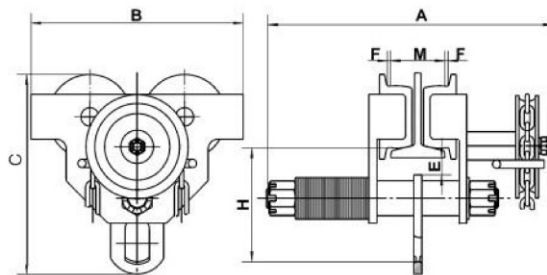
Model	MT ₁						
Rated capacity(T)	0.5	1	2	3	5	10	
Test load (kN)	7.35	14.71	29.42	44.13	61.29	122.58	
Min radius of curve (m)	0.9	1	1.1	1.3	1.4	1.7	
Dimension (mm)	A	264	335	353	371	393	436
	B	216	260	300	345	390	470
	C	195	239	286	336	393	500
	E	31	32.5	31	35	37	45
	F	≈3					
I-Beam width (mm)	64-152	64-203	88-203	102-203	114-203	125-203	

Geared Trolley



Model:
MT₂

» Longer hand chain is available.



Model	MT ₂						
Rated capacity	0.5T	1T	2T	3T	5T	10T	
Test load (kN)	7.35	14.71	29.42	44.13	61.29	122.58	
Running height (m)	2.5	2.5	3	3	3	3	
Min radius of curve (m)	0.9	1	1.1	1.3	1.4	1.7	
Dimension (mm)	A	264	390	400	430	444	489
	B	216	260	300	345	390	470
	C	195	239	286	336	393	500
	E	31	32.5	31	35	37	45
	F	≈3					
	H	110	136	161	185	220	280
	K	/	/	/	/	/	/
	L	/	/	/	/	/	/
I-Beam width (mm)	50-102	64-203	88-203	102-203	114-203	125-203	