



TOOLS CATALOGUE - 2016

RATCHET PIPE THREADERS

AN ISO-9001:2008 Co.

RATCHET PIPE THREADER (BSPT) Duly ISI Marked to IS:16176:2014

Compact tool for threading small pipes, suitable for use in difficult corners and close to walls. The Die Heads have large clearance holes to prevent chips out. Standard Tapper Pipe Threading; Complete Threading in one cut. Compact Lightweight Packed in Metal and Plastic carrying box.

P-111



REALLY GRACEFUL
THE FIRST RECIPIENT OF
ISI MARK IN INDIA
IN 2015!



Prod. No.	111C	111E	111G	111H	111J	111M	111N	111P	111R	111S
Size (Inch)	1/2 - 1	1/2 - 1 1/4	1/2 - 2	3/8 - 2	1 1/4 - 2	4	2 1/2 - 3	5	6	1/4 - 6
Size (mm)	15-25	15-32	15-50	10-50	32-50	100	65-80	125	150	6-150
Wt. (Kgs.)	6.000	6.000	15.500	16.000	11.600	14.800	21.000	30.500	28.500	131.200

SPARE DIE HEAD (BSPT) (ISI Marked)

P-112



Prod. No.	112A	112B	112C	112D	112E	112F	112F(a)
Size (Inch)	1/4	3/8	1/2	3/4	1	1 1/4	1 1/4 (Big)
Wt. (Kgs.)	1.204	1.186	0.961	0.826	1.600	0.860	2.390
Prod. No.	112G	112H	112I	112J	112K	112L	112M
Size (Inch)	1 1/2	2	2 1/2	3	4	5	6
Wt. (Kgs.)	2.358	2.235	6.772	6.832	9.574	18.535	14.590

SPARE RATCHET HANDLE (ISI Marked)

P-114



Prod. No.	114A	114B	114C	114D	114E
Size (Inch)	1/4 - 1 1/4	1 1/4 - 2	2 1/2 - 3	4	5 - 6
Wt. (Kgs.)	1.685	2.106	6.706	7.418	14.270

SPARE CHASER (BSPT) (ISI Marked)

P-113



Prod. No.	113A	113B	113C	113D	113E	113F	113F(a)
Size (Inch)	1/4	3/8	1/2	3/4	1	1 1/4	1 1/4 (Big)
Wt. (Kgs.)	0.070	0.062	0.070	0.062	0.093	0.090	0.183
Prod. No.	113G	113H	113I	113J	113K	113L	113M
Size (Inch)	1 1/2	2	2 1/2	3	4	5	6
Wt. (Kgs.)	0.165	0.162	0.500	0.570	0.650	0.740	0.700

HAND PVC PIPE THREADER (BSPT)

Compact economical tool designed for threading on PVC pipe, Most convenient and most versatile threader sets include fix round dies for various sizes upto 2".

P-354



Prod. No.	354A	354B
Size (Inch)	1/2 - 1	1 1/4 - 2
Wt. (Kgs.)	1.900	9.000

PROFESSIONAL TOOLS FOR NEW GENERATION





RATCHET CONDUIT THREADER (BSC)

Compact tools for threading small electric conduit pipes upto 2", suitable for use in difficult corner and close to walls. Dies are designed with large clearance holes to prevent chips out and Standard Conduit (BSC) threading in one cut.



Prod. No.	133A	133B	133C	133D	133E
Size (Inch.)	1/2 - 3/4	3/4 - 1	1 - 1 1/4	1 1/4 - 2	1 1/2 - 2
Size (mm)	12 - 20	20 - 25	25 - 32	32 - 50	40 - 50
Wt. (Kgs.)	3.000	3.000	3.800	10.900	14.700

SPARE CONDUIT DIE HEAD (BSC)



Prod. No.	134A	134B	134C	134D	134E	134F
Size (Inch.)	1/2	3/4	1	1 1/4	1 1/2	2
Size (mm)	12	20	25	32	40	50
Wt. (Kgs.)	0.865	0.880	0.825	3.050	3.090	2.685

SPARE CONDUIT DIE (BSC)



Prod. No.	135A	135B	135C	135D	135E	135F
Size (Inch.)	1/2	3/4	1	1 1/4	1 1/2	2
Size (mm)	12	20	25	32	40	50
Wt. (Kgs.)	0.080	0.075	0.062	0.680	0.600	0.445

SPARE RATCHET HANDLE FOR CONDUIT (BSC)



Prod. No.	136A	136B
Size (Inch.)	1/2 - 1	1 1/4 - 2
Size (mm)	12 - 25	32 - 50
Wt. (Kgs.)	1.400	2.135

SUPER RATCHET PIPE THREADER (BSPT/NPT)

Super Ratchet pipe threader BSPT/NPT is a Compact tool for threading small pipes and helps in threading at difficult corners and close to walls. The Die Heads have large clearance holes to prevent chips out. Standard Tapper pipe threading; complete threading in one cut. Die Heads are interchangeable with other world popular brands. Compact Light weight packed in Attractive strong plastic Box.



P-170

Prod. No.	170A	170B	170C	170D	170E	170F
Size (Inch.)	1/2 - 1	1/2 - 1 1/4	3/8 - 1 1/4	1/4 - 1 1/4	1 1/4 - 2	1/2 - 2
Wt. (Kgs.)	4.700	5.560	6.230	8.850	7.600	12.300

SPARE SUPER DIE HEAD CHASER FITTED (BSPT/NPT)



Prod. No.	171A	171B	171C	171D	171E	171F	171G	171H
Size (Inch.)	1/4	3/8	1/2	3/4	1	1 1/4	1 1/2	2
Wt. (Kgs.)	0.650	0.660	0.670	0.665	0.825	0.875	1.880	1.840

SPARE SUPER RATCHET HANDLE



Prod. No.	173A	173B
Size (Inch.)	1/4 - 1 1/4	1 1/4 - 2
Wt. (Kgs.)	1.400	2.500

SPARE SUPER CHASER (BSPT/NPT)



Prod. No.	172A	172B	172C	172D	172E	172F	172G	172H
Size (Inch.)	1/4	3/8	1/2	3/4	1	1 1/4	1 1/2	2
Wt. (Kgs.)	0.070	0.062	0.070	0.062	0.093	0.183	0.185	0.180

ADJUSTABLE PIPE DIE STOCK (BSP/BSC)

The Adjustable Pipe Die Stock is a economical, Most Convenient and most versatile threader sets. Its adjustment can be set on different type of pipes. Parallel threads always have clearance for pipe fittings.



Prod. No.	110A	110B	110C
Size (Inch.)	1/2 - 1	1 1/4 - 2	2 1/2 - 3
Wt. (Kgs.)	4.750	11.125	18.000

SPARE DIE FOR PVC PIPE THREADER (BSPT)



Prod. No.	355A	355B	355C	355D	355E	355F
Size (Inch.)	1/2	3/4	1	1 1/4	1 1/2	2
Size (mm)	12	20	25	32	40	50
Wt. (Kgs.)	0.132	0.125	0.115	1.000	1.000	0.800

RATCHET PIPE REAMER

Self designed Ratchet Pipe Reamer is for extra-fast and easy hand reaming of the pipes edge. This Reamer self-feeding and easy to start and operate.



Prod. No.	115A	115B	115C
Size (Inch.)	3/8 - 2	3/8 - 3	2 - 4
Wt. (Kgs.)	2.930	4.250	7.500

ELECTRIC PIPE THREADING MACHINE (BSPT/NPT)

Compact structure made of cast aluminium alloy light weight body, easy operation, good safety & low noise, referring to the international advanced technology suitable for threading requirement of pipe thread for BSPT & NPT on request. Profiling die head for standard taper pipe thread. Dependable clamping, free from slip and deformation. Self-lubricating die head & two more additional functions are pipe cutting & De-burring of pipe. There are disassemble stand & wheel stand.

P-140



Wheel Trolley for P-140B & 140C

Prod. No.	140A	140B
Size for pipe (Inch)	1/2 - 2	1/2 - 3
Spec.	230V/50Hz., 750W, 27rpm	230V/50Hz., 750W, 26/11rpm
Die Head Including (Inch.)	1/2 - 2	1/2 - 2 & 2 1/2 - 3
Dies Including (Inch.) BSPT or NPT	1/2 - 3/4 & 1 - 2	1/2 - 3/4, 1 - 2 & 2 1/2 - 3
Wt. (Kgs.)	81.000	135.000
Prod. No.	140C	140D
Size for pipe (Inch)	1/2 - 4	2 1/2 - 6
Spec.	230V/50Hz., 750W, 24/10rpm	230V/50Hz., 1100W, 16/6rpm.
Die Head Including (Inch.)	1/2 - 2 & 2 1/2 - 4	2 1/2 - 4 & 5 - 6
Dies Including (Inch.) BSPT or NPT	1/2 - 3/4, 1 - 2 & 2 1/2 - 4	2 1/2 - 4 & 5 - 6
Wt. (Kgs.)	150.000	215.000

UNIVERSAL ELECTRIC PIPE & BOLT THREADING MACHINE (BSPT/NPT/MM/BSPP/BSC)

Compact structure made of cast aluminium alloy light weight, easy operation, good safety & low noise, refer to the international advanced technology suitable for threading requirement of pipe & bolt both for BSPT/NPT/MM/BSPP/BSC providing one set of Die head with machine for BSPT or NPT & Bolt die head for various thread can be order separately. Dependable clamping, free from slip & deformation. Self-lubricating die head & two more additional functions are pipe cutting & De-burring of pipe.

P-1401



ROTHENBERGER TYPE

Prod. No.	1401A	1401B	1401C
Size for Pipe (Inch.)	1/2 - 2	1/2 - 2	Optional
Size for Bolt (mm)	Optional	10 - 33	10 - 33
Spec.		230W/50Hz., 750W, 27rpm	
Die Head Incl. For	Pipe 1/2 - 2"	Pipe & Bolt 1/2 - 2" & 10 - 33mm	Bolt 10 - 33mm
Dies Incl. (Inch. & mm)	1/2 - 3/4" & 1 - 2"	1/2 - 3/4" & 1 - 2" & 10 - 33	10, 12, 14, 16, 18/22, 24/27, 30/33
Wt. (Kgs.)	81.000	86.000	84.000

THREAD NIPPLE HOLDER

The Thread Nipple Holder makes short nipple easily in any length and can be used with any pipe threading machine. Pipe clamping from the inside enables the manufacture of nipple from outer plastic coated pipes.

P-174



Prod. No.	174A	174B	174C	174D	174E
Size (Inch.)	1/2	3/4	1	1 1/2	1 1/2
Wt. (Kgs.)	0.400	0.600	0.600	0.700	1.200
Prod. No.	174F	174G	174H	174I	
Size (Inch.)	2	2 1/2	3	4	
Wt. (Kgs.)	2.000	3.000	4.500	5.000	

ADAPTER FOR CLOSE THREADING NIPPLE (BSPT/NPT)

Adapter is used to Hold short or close nipples or studs for threading BSPT or NPT & it includes one insert & 5 adapters Size 1/2", 3/4", 1", 1 1/4" & 1 1/2" & main body it self 2" adaptor.

P-121

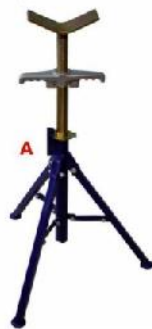


Prod. No.	121A	121B
Size (Inch)	1/2 - 2	1/2 - 2
Thread	BSPT	NPT
Wt. (Kgs.)	7.500	7.500

UNIVERSAL PIPE STANDS

It is heavy duty light weight adjustable pipes stand are used to balance pipe while Pipe Threading, Grooving or cutting and it is available fix and folding both types & rollers can be fitted on any types of stand.

P-1472



Prod. No.	1472A
Height Adjustment (mm)	700 - 1220
Pipe Capacity (mm) Max.	300
Load Capacity (Kgs.)	1000
Type	Fixed
Wt. (Kgs.)	10.500



Prod. No.	1472B
Height Adjustment (mm)	700 - 1220
Pipe Capacity (mm) Max.	300
Load Capacity (Kgs.)	1000
Type	Folding
Wt. (Kgs.)	12.000



Prod. No.	1472C
Height Adjustment (mm)	700 - 1220
Pipe Capacity (mm) Max.	300
Load Capacity (Kgs.)	1000
Type	Folding with Rollers
Wt. (Kgs.)	12.500

P-147



Prod. No.	147A	147B	147C	147D
Size (Inch)	1/2 - 2	1/2 - 3	1/2 - 4	2 1/2 - 6
Wt. (Kgs.)	11.700	21.700	30.700	40.600





SELF LOCKING PIPE VICE

Self Locking Pipe Vice also popular in the name of Hinged Pipe Vice. The frame and base are hinged together. The Replaceable steel jaws are accurately machined, hardened and tempered. The handle and main screw are also of steel while the frames and bases are of strong SG Iron casting (Spheroidal Graphite) guaranteed unbreakable.

P-315



Prod.No.	315A	315B	315C	315D	315E	315F
Size (mm)	35	50	60	80	100	150
Wt. (Kgs.)	2.500	3.900	5.200	7.800	11.400	25.800

PIPE VICE PILLAR TYPE

Pipe Vice Pillar Type is entirely different from the existing vices. The frame and base are combination of Mild Steel and S.G Iron graded casting to ensure strength and durability. Its fixed jaws are accurately machined hardened & tempered. The handle and main screw are also of steel while the frame is joint with two High tensile L-Key bolts.

P-313



Prod.No.	313A	313B	313C	313D	313E
Size (mm)	35	50	75	100	150
Wt. (Kgs.)	2.000	3.350	6.800	9.100	21.250

CLAMP VICE (For Hand Pump)

Steel fabricated Clamp vice is used on fixing of Hand pumps and for maintenance purpose. The replaceable steel jaws are accurately machined, hardened and tempered. The handle and main screw are also of steel while the frames and basis are un-breakable.

P-317



Prod.No.	317A	317B	317C
Size (mm)	12	32	65
Wt. (Kgs.)	6.000	9.400	9.900

PIPE VICE OPEN TYPE

Pipe Vice Open Type is improved model having strong SG Iron casted body, Replaceable Steel Jaws hardened/tempered & accurately machined. The handle and main screw are also of steel.

P-316



FProd.No.	316A	316B	316C	316D	316E	316F	316G
Size (Inch.)	2	3	4	6	8	10	12
Wt. (Kgs.)	6.500	12.000	18.400	33.000	44.150	57.000	73.250

BENCH VICE YOKE TYPE (HEAVY DUTY)

Bench Yoke Pipe Vice also popular in US and Europe. The frame and base are hinged together. The Replaceable steel jaws are accurately machined, hardened and tempered. The handle and main screw are also of steel while the frames and bases are of strong SG Iron casting (Spheroidal Graphite) guaranteed unbreakable.

P-369



Prod.No.	369A	369B	369C	369D
Size (Inch.)	1/8 - 2	1/8 - 2.1/2	1/8 - 3	1/8 - 4
Wt. (Kgs.)	3.500	6.000	7.500	12.000

RIGID TYPE

PIPE VICE FITTED STAND LIGHT

The tripod stand is a fabricated steel frame fitted with a Self locking Pipe Vice Capacity 60mm made of SG Iron casting. The stand features a hinged tray, for odds and ends, and a fold down platform so that the Plumber has a firm foothold and can add his own weight to the stand, creating a very stable work station for heavy on site jobs. The tripod stand is a fabricated steel frame fitted with a Self locking Pipe Vice Capacity 60mm made of SG Iron casting. The stand features a hinged tray, for odds and ends, and a fold down platform so that the Plumber has a firm foothold and can add his own weight to the stand, creating a very stable work station for heavy on site jobs.

P-315G



Prod.No.	315G
Size (mm)	60
Wt. (Kgs.)	18.500

MULTI PURPOSE VICE STAND HEAVY (With vice)

It is fabricated steel frame surmounted by a heavy gauge mounting plate which is drilled to accept the range of Self Locking Pipe Vices, Chain Vice and Table Vice etc. The stand features a hinged tray, for odds and ends, and a fold down platform so that the operator has a firm foothold and can add his own weight to the stand, creating a very stable work station for heavy on site jobs.

P-315H



Prod.No.	315H	315I	315J	315K
Size (mm)	50	60	80	100
Wt. (Kgs.)	21.400	22.700	25.300	28.900

CHAIN TRISTAND WITH PIPE YOKE VICE

Portable tristan with Yoke vice having three integral legs with folding tray for easy to carry and setup. Its large structure made of Cast Aluminium alloy light weight with Yoke pipe vice capacity 1/8" to 2.1/2" and provided different holes for hanging tools and opposite side given pipe rest, three pipe benders and ceiling brace screw.

P-284



Prod. No.
Size (Inch.)
Wt. (Kgs.)

284A
1/8 - 2.1/2"
20.000

PORTABLE CHAIN TRISTAND

Portable chain tristan having three integral legs with folding tray for easy to carry and setup. Its large structure made of Cast Aluminium alloy light weight with chain vice capacity 1/8" to 6" and provided different holes for hanging tools and opposite side given pipe rest, three pipe benders and ceiling brace screw.

P-314



Prod. No.
Size (Inch./mm)
Wt. (Kgs.)

314A
1/8 - 6 (3-150)
20.000

BENCH VICE (Heavy Duty Double Rib)

Heavy Duty "Inder" Bench Vices are probably the best of their type any where in the world known for the high quality of design, material and manufacturing standards. Heavy Duty Bench Vices, Double Rib, Anvil and V. Block are constructed from high quality grey iron casting of guaranteed strength under compression. Special Swivel base can be fitted for movement and lock bolt maintains positive lock to avoid slippage under heavy pressure.

P-335

FIXED BASE			SWIVEL BASE				
Prod. No.	335A	335B	335C	335D	335E	335F	335G
Size (No. xmm)	1x80	2x90	3x100	4x115	5x125	6x150	8x200
Wt. (Kgs.)	7.700	9.000	15.200	18.000	24.450	28.250	48.700

STEEL VICE (Fixed Base)

Compact design Fabricated Steel Vice (Fixed Base) harden and knurled jaws with large anvil surface, protected vice spindle with Rolled thread.

P-50



Prod. No.	50A	50B	50C	50D	50E	Prod. No.	51A	51B	51C	51D	51E
Size (Inch.)	3	4	5	8	8	Size (Inch.)	3	4	5	6	8
Wt. (Kgs.)	3.600	5.500	9.300	11.400	12.500	Wt. (Kgs.)	4.100	6.200	10.700	12.300	13.500

BENCH CHAIN VICE

Bench chain vice constructed with Rugged SG-iron base with harden jaws, handy pipe rest and bender.

P-254



Prod. No.	254A	254B	254C	254D
Size (Inch.)	1/8 - 2.1/2	1/8 - 4	1/4 - 6	1/2 - 8
Wt. (Kgs.)	3.000	6.000	8.850	13.000

CHAIN PIPE VICE

Chain Vice have extra powerful grip. Pipe stay on Both hardened steel jaws & high tensile leaf chain locked into a slot between the jaws & tensioned by a handle & screw. Strong SG Iron casted body is unbreakable & can easy to store due to compact.

P-103



Prod. No.	103A	103B	103C	103D	103E
Size (Inch.)	2	2 1/2	3	4	6
Wt. (Kgs.)	3.940	3.700	5.500	9.400	13.500

BENCH VICE (Heavy Duty Single Rib)

"INDER" Bench vice (Single Rib) are the best in light duty vices compare to double rib but due to high quality design, material and manufacturing standards it becomes 2nd choice after heavy duty vices.

P-337

FIXED BASE

Prod. No.	337A	337B	337C	337D	337E
Size (No. xmm)	0x70	1x80	2x90	3x100	4x115
Wt. (Kg.)	3.000	6.700	8.500	12.500	14.500
Prod. No.	337F	337G	337H	337I	337J
Size (No. xmm)	5x125	6x150	8x200	10x250	12x300
Wt. (Kgs.)	21.000	25.000	36.500	52.400	55.400

Record Type

Match Quality but not price



STEEL VICE (Swivel Base)

Compact design Fabricated Steel Vice (Swivel Base) harden and knurled jaws with large anvil surface, protected vice spindle with Rolled thread.

P-51



PIPE LIFTER

Pipe lifter is used in application to lift the pipe during installation of India mark-II hand pump.

P-179



Prod. No.	179A	179B	179C
Size (Inch.) I.D.	1 1/4	2	2 1/2
Size (mm) O.D.	42.0	60.3	76.1
Wt. (Kgs.)	3.700	3.800	4.000





PIPE WRENCH (Heavy Duty)

Duly Marked to IS:4003 (Part-2), 1986/97

This Heavy Duty Pipe Wrench is specially used in the oil, gas and Civil engineering Industries. Parts are interchangeable. High-tensile strong SG Iron casted Handle and Hardened tool steel parts are designed to work on Heavy Job.

P-333



IS:4003 (PART-2)

CML-9322370

Prod. No.	333A	333B	333C	333D	333E	333F	333G	333H
Size (Inch.)	8	10	12	14	18	24	36	48
Wt. (Kgs.)	0.425	0.925	1.200	1.425	2.500	4.100	9.400	16.000

PIPE WRENCH (General Purpose)

Duly Marked to IS:4003 (Part-1), 1978/95 with Amendment No. 1/2001

The most popular and heavy demand Stillson Pipe Wrench is made from Drop Forged tested steel and its High-tensile steel frame holds all these components together.

P-334



IS:4003 (PART-1)

CML-9322269

Prod. No.	334A	334B	334C	334D	334E	334F	334G	334H
Size (Inch.)	8	10	12	14	18	24	36	48
Wt. (Kgs.)	0.290	0.600	0.845	1.085	1.770	2.800	6.190	10.000

ALUMINIUM ALLOY PIPE WRENCH (Heavy Duty) NON ISI

This Aluminium Pipe Wrench having Light Weight Aluminium Alloy strong body Handle for easy work and its parts are from Hardened tool steel.

P-339



NON ISI

Prod. No.	339A	339B	339C	339D	339E	339F	339G	339H	339I
Size (Inch.)	8	10	12	14	18	24	36	48	60
Wt. (Kgs.)	0.240	0.540	0.720	0.800	1.400	2.750	4.000	6.800	15.400

ALUMINIUM ALLOY PIPE WRENCH (Heavy Duty)

Duly Marked to IS:4003 (Part-2), 1986/97

This Aluminium Pipe Wrench having Light Weight Aluminium Alloy strong body Handle for easy work and its parts are from Hardened tool steel.

P-339



IS:4003 (PART-2)

CML-9322370

Prod. No.	339A	339B	339C	339D	339E	339F	339G	339H
Size (Inch.)	8	10	12	14	18	24	36	48
Wt. (Kgs.)	0.260	0.645	0.800	0.960	1.700	3.000	5.390	9.980

PIPE WRENCH (Heavy Duty) NON ISI

This Heavy Duty Pipe Wrench is specially used in the oil, gas and Civil engineering Industries. Parts are interchangeable. High-tensile strong SG Iron casted Handle and Hardened tool steel parts are designed to work on Heavy Job.

P-333



NON ISI

Prod. No.	333A	333B	333C	333D	333E	333F	333G	333H	333I
Size (Inch.)	8	10	12	14	18	24	36	48	60
Wt. (Kgs.)	0.450	0.700	1.090	1.265	1.970	3.730	7.100	11.100	23.000

HEAVY DUTY PIPE WRENCH WITH HAMMER

Unique Design Heavy Duty Pipe Wrench with Hammer is used in the field of Oil, Gas and Civil engineering Industries but its unique flat surface that is ideal for occasional use as a hammer. Parts are interchangeable. High tensile strong Ductile iron casted handle and hardened tool steel parts are designed to work on heavy job.

P-476



Prod. No.	476A	476B	476C	476D	476E	476F	476G	476H
Size (Inch.)	8	10	12	14	18	24	36	48
Wt. (Kgs.)	0.474	0.826	1.242	1.705	2.659	4.938	8.374	16.250



HEAVY DUTY OFFSET PIPE WRENCH

Special Designed "Inder" Offset Pipe Wrench having different look but it is fast and easy grip for pipe working in restricted spaces or close to a wall. High-tensile strong SG Iron casted Handle and Hardened tool steel parts are designed to work on Heavy Job.

P-332



Prod. No.	332A	332B	332C	332D	332E	332F	332G	332H
Size (Inch.)	8	10	12	14	18	24	36	48
Wt. (Kgs.)	0.465	0.885	1.275	1.570	2.900	5.660	7.500	11.500

HEAVY DUTY CORNER PIPE WRENCH 90°

Special Designed Corner Pipe Wrench 90° for pipe working in restricted spaces, narrow space and corner where other wrenches fail to work. High tensile strong Ductile Iron Casted Handle and Hardened tool steel parts are designed to work on Heavy Job.

P-377



Prod. No.	377A	377B	377C	377D	377E	377F	377G	377H
Size (Inch.)	8	10	12	14	18	24	36	48
Wt. (Kgs.)	0.465	0.995	1.275	1.570	2.900	5.660	7.500	11.500

SPUD WRENCH

Spud wrench is designed for square or rectangular stock having narrow and smooth toothless jaws.

P-439



Prod. No.	439A
Size (Inch.)	12
Jaw Opening (mm)	10 - 67
Wt. (Kgs.)	1.100

RAPID GRIP PIPE WRENCH

Unique design Rapid grip pipe wrench to provide with the speed and best performance. It operate with one hand and hold job quickly with spring loaded jaw and ratcheting action.

P-328



Prod. No.	328A	328B	328C	328D	328E	328F	328G	328H
Size (Inch.)	8	10	12	14	18	24	36	48
Wt. (Kgs.)	0.500	0.830	0.950	1.250	1.750	3.500	6.000	11.500

RAPID GRIP PIPE WRENCH (Aluminium alloy)

Unique design Aluminium Alloy Rapid grip pipe wrench is light weight speedy. It operate with one hand and hold job quickly with spring loaded jaw and ratcheting action.

P-327



Prod. No.	327A	327B	327C	327D	327E	327F	327G	327H
Size (Inch.)	8	10	12	14	18	24	36	48
Wt. (Kgs.)	0.300	0.500	0.700	0.800	1.200	2.700	4.500	8.500

STRAP WRENCH

Aluminium Alloy strong body Strap wrench is designed for Chrome-plated, PVC & painted surfaces. Its robust strap of special Nylon for quick grip without damaging surface.

P-101



Prod. No.	101A	101B
Size (Inch.)	12" Grip 3"	12" Grip 8"
Wt. (Kgs.)	0.275	0.290

CHAIN PIPE WRENCH FORGED

Duly Marked to IS:4123, 1982/95 with Amendment 1 to 3.

Forged Steel Hardened Jaws/Handle and strong flat links chain is mostly used in trench for all types of pipe fitting jobs, from oil field to general work.

P-100



Prod. No.	100A	100B	100C	100D	100E	100F
Size (Inch.)	2	3	4	6	8	12
Size (mm)	50	80	100	150	200	300
Wt. (Kgs.)	3.500	5.680	8.970	11.100	13.700	25.380

CHAIN PIPE WRENCH FORGED HANDLE NON-ISI

High-tensile, strong SG Iron Casted Handle with Strong flat link is designed by "INDER" for use at trench & all types of Pipe Fittings Job, from Oil field to general work where strength is required.

P-29



ROUND FORGED HANDLE (R. F. H)



Prod. No.	29A	29B	29C	29D	29E	29F	29G
Size (Inch.)	2	3	4	5	8	10	12
Size (mm)	50	75	100	150	200	250	300
Wt. (Kgs.)	2.700	5.000	8.000	9.550	13.000	20.000	25.000

CHAIN WRENCH DOUBLE END NON ISI

High-tensile, strong SG Iron Casted Handle with Strong flat link is designed by "INDER" for use at trench & all types of Pipe Fittings Job, from Oil field to general work where strength is required.

P-45



DUCTILE IRON HANDLE (D. I. H)



Prod. No.	45A	45B	45C	45D	45E	45F	45G
Size (Inch.)	2	3	4	6	8	10	12
Size (mm)	50	75	100	150	200	250	300
Wt. (Kgs.)	2.700	5.000	8.210	10.420	13.320	20.000	25.000





CHAIN PIPE WRENCH (For Large Diameter Pipes)

Alloy Steel Hardened Jaws/Handle and strong flat links chain is mostly used on large diameter pipe fitting & cutting jobs in oil field & municipal work. We designed these sizes according to American standard because Indian standard are not available.

P-500

AMERICAN STANDARD



Prod. No.	500A	500B	500C	500D	500E	500F	500G
Size (Inch.)	10	14	16	18	24	36	48
Size (mm)	250	350	400	450	600	900	1200

CHAIN WRENCH (Heavy Duty)

A double reversible jaw gives ratchet feeling without removing the wrench from the pipe. Parts are interchangeable. High-tensile strong SG Iron casted Handle and Hardened tool steel parts are designed to work on

P-44



Prod. No.	44A	44B	44C	44D	44E
Size (Inch.)	2	3	4	6	8
Wt. (Kgs.)	3.400	4.400	7.500	14.600	22.000

REVERSIBLE CHAIN WRENCH

Double sided toothed Jaws. Heat treated reversible Chain Wrench is designed for easy operation in less space where other wrenches failure.

P-102



Prod. No.	102A
Size (Inch. & mm)	12 (300) Holding Capacity upto 4"(100mm)
Wt. (Kgs.)	0.985

BASIN WRENCH

Single hand Ratcheting Spring Loaded Jaws in Hardened forged alloy steel is useful under sinks and in other quarters like-Wash Basin, Engine Assembling, Workshop & Sanitary etc.

P-336



Prod. No.	336A
Size (Inch.)	3/8 - 1 1/4
Wt. (Kgs.)	0.500

BASIN WRENCH (Telescopic)

Single Hand Ratcheting Spring loaded hardened forged alloy steel jaws with telescopic handle is used under sinks and in other quarters like-Wash Basin, Engine assembling, Workshop and Sanitary etc where space is less.

P-180



Prod. No.	180A
Size (Inch.)	3/8 - 1 1/4
Wt. (Kgs.)	0.800

PIPE CUTTER (For G.I. Pipe)

Manual operated strong SG Iron casted body Pipe Cutter having one cutting wheel and two guide roller helps to cut fast, clean and taper without any electricity. A long handle is provided for quick, easy and adjustable on different size of pipe for cutting up to the Capacity. Special cutting wheels for Stainless Steel Pipe are also available on request.

P-118



Prod. No.	118A	118B	118C	118D	118E
Size (Inch.)	3/8 - 1	1/2 - 2	3/4 - 3	1 - 4	2 - 6
Wt. (Kgs.)	1.900	2.200	4.400	7.600	9.700

SUPER PIPE CUTTER (For G.I. Pipe)

Super pipe cutter is heavy duty manual operated G.I. pipe having one cutting wheel & two guide rollers for fast & clean cutting & same cutter can be used to cut stainless steel pipe to just change the cutting wheel.

P-253



Prod. No.	253A	253B	253E
Size (Inch.)	1/8 - 2	1 - 3	2 - 4
Wt. (Kgs.)	3.200	6.900	8.200

PIPE CUTTER AMERICAN TYPE

Pipe Cutter American type is most popular design in united states to cut G.I Pipe having one cutting wheel and two guide rollers for fast & clean cutting & same cutter can be used to cut stainless pipe to just change the cutting wheel.

P-371



Prod. No.	371A	371B
Size (Inch.)	1/4 - 2	1/2 - 3
Wt. (Kgs.)	1.800	3.250

TUBE CUTTER

One cutting wheel and two rollers suitable for cutting Copper, Brass, Aluminium, PVC and thin wall thickness pipe upto 30mm. It is fitted with a Reamer.

P-380



Prod. No.	380A
Size (mm & Inch.)	(3-30) 1/8 - 1 1/8
Wt. (Kgs.)	0.300

MINI TUBE CUTTER

One cutting wheel & Two rollers having small pressure Die casted body suitable for cutting Copper, Brass, Aluminium, PVC & thin wall thickness pipe in less space.

P-379



Prod. No.	379A	379B
Size (mm & Inch.)	(3-18) 1/8 - 5/8	(3-22) 1/8 - 7/8
Wt. (Kgs.)	0.105	0.115

SOIL PIPE CUTTER

Hand operated Soil Pipe Cutter with best technology light weight to cuts Soil pipe, Cast Iron, Concrete and Clay pipe where space is limited with simple ratcheting action, give smooth cut on lighter wall pipe. Wheels cutters are made of high shock resistant tool steel. Complete with hand guard to protect operator's knuckles when cutting. It is used at trenches, running pipe lines where under water, in pits and in noise free zones etc.

P-999



Prod. No.	999A	999B	999C	999D
Size (Inch.)	1 1/2 - 6	1 1/2 - 8	4 - 12	4 - 20
Wt. (Kgs.)	8.200	10.300	13.000	18.000

ROTARY PIPE CUTTER

Hand Operated Rotary Pipe Cutter with best technology to cuts the Cast Iron, Ductile Iron and Mild Steel pipes with four wheel cutters with only 45° to 60° clearance and its spring action guide helps to alignment on pipe for correct cutting. Wheels cutters are made of high shock resistant tool steel. It is used at trenches, running pipe lines where under water, in pits and in noise free zones etc and it is normally available upto 24" and 30" and 36" on request.

P-306



Prod. No.	306A	306B	306C	306D	306E	306F	306G	306H
Size (Inch.)	3-6	6-9	9-12	12-15	15-18	21-24	30	36
Wt. (Kgs.)	17.400	19.500	21.850	27.900	85.000	108.000	135.000	150.000

HINGED PIPE CUTTER

Hand operated Hinged Pipe Cutter with best technology to cuts the Cast Iron, Ductile Iron and Mild Steel pipes with four wheel cutters with only 90° to 110° clearance and its spring action guides help to alignment on pipe for correct cutting. Wheels cutters are made of high shock resistant tool steel. It is used at trenches, running pipe lines where under water, in pits and in noise free zones etc and it is available upto 12" only.

P-305



Prod. No.	305A	305B	305C
Size (Inch.)	3-6	6-9	9-12
Wt. (Kgs.)	10.000	13.500	22.000

Size available Upto 12"

ROTARY PIPE CUTTER WITH CHAIN PIPE WRENCH

Rotary Pipe Cutter with Chain Pipe Wrench is separately specified as complete category for easy to select complete set of tool to avoid any hindrance while installation of cutter for cutting. In this combination, there are One Complete cutter and one Chain pipe Wrench P. 45 or P. 100 or P. 500 to hold pipe before cutting other wise loose pipe can't be cut out.

P-312



Prod. No.	312A	312B	312C	312D	312E	312F	312G	312H
Size (Inch.)	3-6	6-9	9-12	12-15	15-18	21-24	30	36
Size of Chain Wrench	6"	10"	12"	16"	18"	24"	36"	36"

GUILLOTINE HINGED PLASTIC PIPE CUTTER

Guillotine Hinged Plastic Pipe cutter suitable for cutting 63 - 315mm dia of any kind of soft plastic and HDPE pipes with just tighten the screw and its sharpen blade gives smooth cutting and bottom base allows balance for straight cutting.

P-382



Prod. No.	382A	382B	382C
Size (mm)	63-125	63-225	63-315
Size (Inch.)	2-4	2-8	2-12
Wt. (Kgs.)	7.500	25.000	46.500





FLARING TOOL 45°

Flaring tool basically meant for soft pipe viz. Copper, Aluminium, Brass tubing. It gives uniform & smooth flairs with minor force, even on large diameter of tubing. Its hardened steel flaring cone, gives uniform flare walls 45°. Sizes of tubing holes clearly marked on the bar & it cover 7 sizes of flares.

P-127



Prod. No. **127A**
Size (Inch.) 3/16 - 5/8 OD (3/16, 1/4, 5/16, 3/8, 7/16, 1/2, 5/8)
Wt. (Kgs.) 0.900

FLARING TOOL 45° (Heavy)

Flaring tool basically meant for soft pipe viz. Copper, Aluminium, Brass tubing. It gives uniform & smooth flairs with minor force, even on large diameter of tubing. Its hardened steel flaring cone, gives uniform flare walls 45°. Sizes of tubing holes clearly marked on the bar & its 2 bars cover 8 sizes of flares.

P-128



Prod. No. **128A**
Size (Inch.) 3/16 - 3/4 OD (3/16, 1/4, 5/16, 3/8, 7/16, 1/2, 5/8, 3/4)
Wt. (Kgs.) 1.400

FLARING & SWAGING TOOL SET

Flaring tool basically meant for soft pipe viz. Copper, Aluminium, Brass tubing. It gives uniform & smooth flairs with minor force, even on large diameter of tubing. Its hardened steel flaring cone, gives uniform flare walls 45°. Sizes of tubing holes clearly marked on the bar & its 2 bars cover 9 sizes of flares & 5 swaging adapters for 3/16", 1/4", 5/16", 3/8", 1/2", 5/8" & 3/4" tubing sizes.

P-129



Prod. No. **129A**
Size (Inch.) 1/8 - 3/4 OD (1/8, 3/16, 1/4, 5/16, 3/8, 7/16, 1/2, 5/8, 3/4)
Packing Corrugated
Wt. (Kgs.) 1.900

SWAGING PUNCH (Six-in-One)

It is small tool having 6 punch sizes for swaging copper and any soft pipe.

P-168



Prod. No. **168A**
Size (Inch.) 3/16, 1/4, 5/16, 3/8, 1/2, 5/8
Wt. (Kgs.) 0.250

G-CLAMP (Heavy Duty)

Heavy Duty G-Clamp having strong SG Iron casted strong body, Drop Handle and swivel shoe is suitable for both wood and metalworking applications. Gripping Point having the correct angle for perfect clamping. Sizes 14", 16", 18", 20" & 24" available on request.

P-52



Prod. No.	52A	52B	52C	52D	52E	52F	52G
Size (Inch.)	2	3	4	6	8	10	12
Wt. (Kgs.)	0.450	0.770	1.000	1.350	2.185	3.500	4.535

QUICK RELEASE C-CLAMP

Quick release C-Clamp designed for fast movement for release and tight the job. Main housing made of ductile iron, Drop handle and swivel shoe is suitable for both wood and metalworking applications. Gripping point having the correct angle for perfect clamping.

P-458

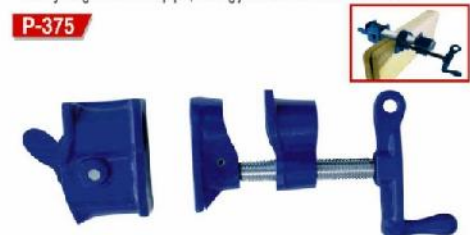


Prod. No.	458A	458B
Size (Inch.)	4	6
Wt. (Kgs.)	0.925	1.845

PIPE CLAMP CLUTCH TYPE

Unique design Pipe Clamp Clutch type used for most woodworking, metalworking and frame assembly application. Mount quickly and easily into any length threaded pipe, sliding jaws locks at desired location

P-375

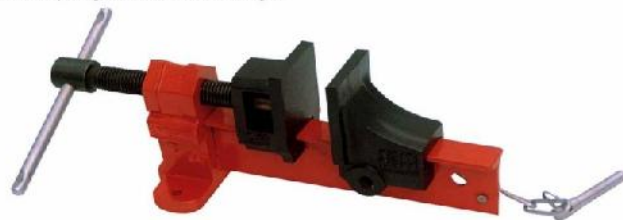


Prod. No.	375A	375B
Size (Inch.) BSPT/NPT	1/2	3/4
Wt. (Kgs.)	0.900	1.250

T-BAR CLAMP

T-Bar-Crimp is made of special T-Bar Section steel & SG Iron casted body. The slides operate on dimensionally accurate T edges ensuring an easy, sliding movement. Head and slides robustly designed to match the bar strength.

P-92



Prod. No.	92A	92B	92C	92D	92E	92F	92G
Size (Ft.)	2	3	4	5	6	7	8
Wt. (Kgs.) (2"-T)	3.450	4.200	4.900	5.200	5.700	6.200	6.700
Wt. (Kgs.) (2 1/2"-T)	4.800	5.450	6.050	6.750	7.500	8.250	9.000

TIRE SCRAPPER TOOL

Handy Tire scrapper tool fitted with sharp rubber cutting blade used to remover serial number from old tires by the tire manufacturer after giving replacement against damager tire.

P-162



Prod. No.	162A
Size (Inch)	6
Wt. (Kgs.)	0.110

SHEET HOLE CUTTER

Sheet Hole Cutter is the unique tool which is used in Electric field when desired hole need in available junction box on any soft sheet M.S, Copper, Brass, Aluminium, PVC and fiber etc at sight without electricity and drill.

P-383



Prod. No.	383A	383B	383C	383D	383E	383F
Size (Inch.)	1/2	3/4	1	1 1/4	1 1/2	2
Size (mm)	12	20	25	32	40	50
Wt. (Kgs.)	0.070	0.086	0.166	0.265	0.370	0.827



OPEN ENDED SLUGGING SPANNER (DIN-133)
Duly Marked to IS:4508:1992 (Re-Affirmed 1997)

Heavy duty drop forged Open ended slugging spanner is specially designed for very heavy duty work. Its durable striking end gives extra utility while tightening and loosening with hammer.

P-97



CRV/40CR FORGED

Prod. No.	97A	97B	97C	97D	97E	97F	97G	97H	97I	97J	97K	97L	97M	97N	97O	97P
Size (mm)	23	24	27	30	32	34	36	38	41	46	50	55	60	65	70	75
Size (Inch.)	7/8	5/16	1.1/16	1.3/16	1.1/4	1.3/8	1.7/16	1.1/2	1.5/8	1.13/16	2.0	2.3/16	2.3/8	2.9/16	2.3/4	3.0
Wt. (Kgs.)	0.234	0.341	0.396	0.440	0.550	0.633	0.726	0.853	0.902	1.001	1.073	1.898	2.200	2.723	3.108	3.245
Prod. No.	97Q	97R	97S	97T	97U	97V	97W	97X	97Y	97Z	97ZA	97ZB	97ZC	97ZD	97ZE	
Size (mm)	80	85	90	95	100	105	110	115	120	125	130	135	140	145	150	
Size (Inch.)	3.3/16	3.3/8	3.9/16	3.3/4	4.0	4.3/16	4.5/16	4.1/2	4.3/4	4.15/16	5.1/8	5.5/16	5.1/2	5.3/4	6	
Wt. (Kgs.)	4.070	4.180	7.950	8.050	10.700	10.700	13.300	12.100	15.000	16.800	17.800	18.700	24.500	28.500	28.000	

RING SLUGGING SPANNER (DIN-7444)

Duly Marked to IS:4509:1992 (Re-Affirmed 1997)

Heavy duty drop forged Ring slugging spanner is specially designed for very heavy duty work. Its durable striking end gives extra utility while tightening and loosening with hammer.

P-98



CRV/40CR FORGED

Prod. No.	98A	98B	98C	98D	98E	98F	98G	98H	98I	98J	98K	98L	98M	98N	98O	98P
Size (mm)	23	24	27	30	32	34	36	38	41	46	50	55	60	65	70	75
Size (Inch.)	7/8	5/16	1.1/16	1.3/16	1.1/4	1.3/8	1.7/16	1.1/2	1.5/8	1.13/16	2.0	2.3/16	2.3/8	2.9/16	2.3/4	3.0
Wt. (Kgs.)	0.180	0.310	0.360	0.400	0.500	0.575	0.657	0.752	0.753	1.119	1.400	1.376	2.000	2.475	2.825	2.950
Prod. No.	98Q	98R	98S	98T	98U	98V	98W	98X	98Y	98Z	98ZA	98ZB	98ZC	98ZD	98ZE	
Size (mm)	80	85	90	95	100	105	110	115	120	125	130	135	140	145	150	
Size (Inch.)	3.3/16	3.3/8	3.9/16	3.3/4	4.0	4.3/16	4.5/16	4.1/2	4.3/4	4.15/16	5.1/8	5.5/16	5.1/2	5.3/4	6	
Wt. (Kgs.)	3.700	3.800	4.350	4.600	5.800	6.300	7.600	7.850	9.250	9.250	12.950	12.950	17.100	17.100	15.050	

DOUBLE OPEN END SPANNER (DIN - 3110)
(Long Pattern) CRV

Drop forged, Chrome Vanadium, Long pattern Chrome plated, Polished head double open end spanners are manufactured as per DIN standard.

P-821



Prod. No.	821-32x36	821-36x41	821-41x46	821-46x50	821-50x55	821-55x60
Size (mm)	32 x 36	36 x 41	41 x 46	46 x 50	50 x 55	55 x 60
Wt. (Kgs.)	0.550	0.690	0.982	1.182	1.700	2.145

BI-HEXAGON RING SPANNER (DIN - 838)
(Long Pattern) CRV

Drop forged, Chrome Vanadium, Long pattern Chrome plated, Polished head BI-Hexagon Ring Spanners are manufactured as per DIN standard.

P-831



Prod. No.	831-32x36	831-36x41	831-41x46	831-46x50	831-50x55	831-55x60
Size (mm)	32 x 36	36 x 41	41 x 46	46 x 50	50 x 55	55 x 60
Wt. (Kgs.)	1.080	1.250	1.445	1.950	2.250	3.100

BASIN WRENCH (Spanner)

Double ended basin wrench (spanner) is made of S.G. Iron for fitting & removal of back nuts & baths Size 15 & 22mm.

P-40



Prod. No.	40A
Size (mm)	250
Nut Size (mm)	15 -22
Wt. (Kgs.)	0.575

SINGLE OPEN END SPANNER (DIN - 894)

Drop forged, chrome plated, polished head single open end spanner are manufactured as per DIN standard.

P-104



Prod No.	104A	104B	104C	104D	104E	104F	104G	104H	104I	104J	104K	104L
Size (mm)	32	34	36	41	46	50	55	60	65	70	75	80
Wt. (Kgs.)	0.320	0.320	0.420	0.520	0.829	0.905	1.200	1.527	2.020	2.250	2.900	3.600
Prod No.	104M	104N	104O	104P	104Q	104R	104S	104T	104U	104V	104W	104X
Size (mm)	85	90	95	100	105	110	115	120	125	130	135	140
Wt. (Kgs.)	3.900	6.900	9.000	10.800	10.500	11.200	11.200	12.200	15.500	18.900	22.000	24.000

WATER PUMP PLIER (Groove Joint)

It is completely Drop Forged, Hardened & tempered. Forged groove & tongue take all the effort to release pin from any stress.

P-2



Prod. No.	2B
Size (Inch.)	10
Wt. (Kgs.)	0.330



SINK DRAIN WRENCH

It is universal tool under the sink works on six, eight and twelve-sided drain nuts as well as basket strainer lock nuts and works on "wing-nut" style drain nuts.

P-460



Prod. No. **460A**
Size (Inch.) 1.1/4 & 1.1/2
Wt. (Kgs.) 0.270

FAUCET HANDLE PULLER

It is used to removes large and small faucet handles with new and longer adjustable puller arms. New one-piece cast cross bar for increased strength and durability. Puller features notches that ensure positive and equal positioning of puller arms on cross bar.

P-461



Prod. No. **461A**
Type Small & Large
Wt. (Kgs.) 0.275

FAUCET SEAT WRENCH 6-STEP

It is heat treated steel, universal fit used for faucet seat as wrench in 6-steps.

P-462



Prod. No. **462A**
Size (Inch.) 6 x 6
Wt. (Kgs.) 0.200

SHUT-OFF WRENCH FOR GAS & WATER

It is used to Shut off as wrench in Emergencies to turn off Gas & Water source.

P-463



Prod. No. **463A**
Size (Inch.) 12 - 15
Wt. (Kgs.) 0.920

WATER HEATER ELEMENT WRENCH

It is used at most of electric water heater elements.

P-464



Prod. No. **464A**
Size (Inch.) 1.1/2
Wt. (Kgs.) 0.270

P.O. PLUG WRENCH

It is used to install or remove pop-up plugs and basket strainers. Prevents rotation during installation and removal.

P-465



Prod. No. **465A**
Type P.O. Plug
Wt. (Kgs.) 0.270

TUB DRAIN REMOVER DRAIN KEY

Its expanding design allows the Drain Key to internally grip in a 360° pattern and expands with a crescent wrench to unlock or install. Bathtub Drains, 1.1/2" or 1.3/4" closet spuds, duplex strainers. A professional tool that expands inside the drain with 3 knurled steel 'shoes,' then turns the drain out using the large nut.

P-466



Prod. No. **466A**
Size (Inch.) 1.1/4 & 1.1/2
Wt. (Kgs.) 0.405

TUB DRAIN REMOVER WRENCH

It is innovative special design to install and remove tub drains without scratching fine finishes. Only tool of its kind that can be turned with a 3/8" or 1/2" ratchet wrench and extension from either end will also remove or install 1/2" square plastic toilet seat nuts.

P-467



Prod. No. **467A**
Size (Inch.) 3/8 or 1/2
Wt. (Kgs.) 0.225

SOFT JAW PLUMBING PLIER

It is used for basin and sink locknuts, trap nuts and toilet spuds. Vinyl grip for comfort and ease and suitable for plastic and metal nuts 1.1/4", 1.1/2" and 2".

P-468



Prod. No. **468A**
Size (Inch.) 1/8 or 4.5/8
Wt. (Kgs.) 0.335

TUB & SHOWER VALVE SOCKET SET

It is 5 pcs socket set to use for Tube & Shower Valve.

P-469



Prod. No. **469A**
Size (Inch.) 21/32x27/32, 29/32x31/32, 1.1/32x1.3/32, 1.5/32x1.9/32, 1.11/32x1.7/16
Wt. (Kgs.) 0.945

BASKET STRAINER WRENCH UNIVERSAL

It is used to holds basket strainer body in position securely. Prevents turning during installation.

P-470



Prod. No. **470A**
Type Universal
Wt. (Kgs.) 0.205

FOUR WAY WATER KEY

It is Four way water key fits stopcocks, sill cocks and valves with internal square key.

P-471



Prod. No. **471A**
Size (Inch.) 1/4 x 9/32 x 5/16 x 11/32 square
Wt. (Kgs.) 0.945

DRUM TAP WRENCH

It is used to remove/install threaded plugs in clean outs and four squares are 0.79", 0.93", 1.16" and 1.33" Two blades measure 1/4" x 1" and 0.48" x 1.5".

P-472



Prod. No.
Size (Inch.)
Wt. (Kgs.)

472A
3/4 to 1.3/4
1.260

REPLACEMENT CLOSET FLANGE

It is used to Replaces any closet ring. Unique screw hole tabs allow the Super Ring to be securely attached to wood or concrete sub floors-Engineered, corrosion-resistant coating. Slotted for 1/4" and 5/16" closet bolts.

P-473



Prod. No.
Size (Inch.)
Wt. (Kgs.)

473A
1/4 & 5/16
0.245

WATER METER BOX KEY

It is used to opening/turn off water meter boxes.

P-474



Prod. No.
Size (Inch.)
Wt. (Kgs.)

474A
6
0.225

ADJUSTABLE COMBINATION WRENCH

It is Adjustable combination wrench fits to spud nuts, slip and lock nuts and basket strainer nuts for various under sink and toilet work. Adjustment from 1 to 3".

P-475



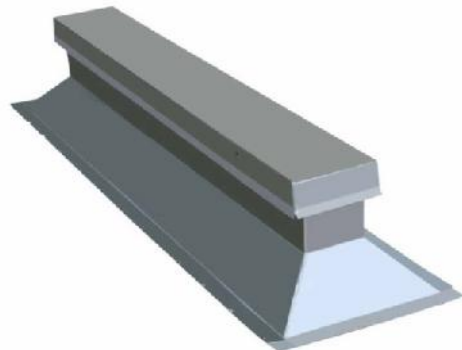
Prod. No.
Size (Inch.)
Wt. (Kgs.)

475A
1 - 3
0.585

ROOF TOP MOUNTING RAILS

Roof Top Mounting Rails are a sure, economical roof equipment pedestal with continuous wood nailer for the proper attachment of roofing flashings, along with a removable cap flashing which offers maximum assurance of a secure, watertight, installation. RPS custom-manufactured equipment rails eliminate the makeshift while avoiding overdesign. They provide standardized supports, fabricated from heavy gauge galvanized steel with continuous welded corners, designed with the structural integrity to support the majority of all roof-mounted equipment. Equipment Mounting Rail available in sizes, 3', 4' & 6' Construction Material 18 Gauge Galvanized steel, For Use With Condensers, Blowers and Other Roof Mounted Equipment, Includes Factory Installed Wood Nailer and 18 Gauge Galvanized Steel Counter-Flashing with Screws.

P-459



Prod. No.
Size (Ft.)
Wt. (Kgs.)

459A
3
12.150

459B
4
14.400

459C
6
21.800

REPAIR CLAMPS (SINGLE)

Single Repair Clamps provides a fast, economical means of repair for pin holes, punctures, or splits in pipe of Steel, Ductile Iron and PVC (HDPE) pipes. Material used 304 Stainless Steel For Band, Bolts and Nuts and Receiver bars are TIG welded to receiver bar and fully passivated after welding with Neoprene Rubber for Gasket or NBR or EPDM for water on temperature -20 to +180 (F) and Pressure 0 - 150 PSI.

P-373



Prod. No.
Size (Inch.)
Length (Inch.)
Wt. (Kgs.)

373A
3/8
3
0.185

373B
1/2
3
0.190

373C
3/4
3
0.190

373D
1
3
0.210

373E
1.1/4
3
0.220

373F
1.1/2
3
0.250

373G
2
3
0.280

373H
2.1/2
3
0.290

373I
3
3
0.310

373J
4
3
0.350

REPAIR CLAMPS (DOUBLE)

Double Repair Clamps provides a fast, economical means of repair for pin holes, punctures, or splits in pipe of Steel, Ductile Iron and PVC (HDPE) pipes. Material used 304 Stainless Steel For Band, Bolts and Nuts and Receiver bars are TIG welded to receiver bar and fully passivated after welding with Neoprene Rubber for Gasket or NBR or EPDM for water on temperature -20 to +180 (F) and Pressure 0 - 150 PSI.

P-374



Prod. No.
Size (Inch.)
Length (Inch.)
Wt. (Kgs.)

374A
3/8
6
0.430

374B
1/2
6
0.430

374C
3/4
6
0.440

374D
1
6
0.450

374E
1.1/4
6
0.485

374F
1.1/2
6
0.505

374G
2
6
0.560

374H
2.1/2
6
0.620

374I
3
6
0.640

374J
4
6
0.745

Y-STRAINER, CAST IRON BODY (NPT)

It is used extensively to strain foreign matter from pipe lines and provide economical protection for costly pumps, meters, valves and other similar mechanical equipment. Machined seats in both body and cap align and lock the screen in place to stop sediment bypass. PTF gasketed cap is used for easy disassembly and assembly. Many others use Loctite, rendering disassembly virtually impossible. Self cleaning is accomplished by opening the plug or valve connected to the blow off outlet. Outlets are NPT tapped and replacement screen material is SS-304. It is as per ASTM A128 Class B.

P-485



Replacement Screen



Prod. No.	Size	A (In.)	B (In.)	C (In.)	Weight (Kgs.)
485A	1/4"	3 - 3/16	2 - 1/16	1/4	0.706
485B	3/8"	3 - 3/16	2 - 1/16	1/4	0.706
485C	1/2"	3 - 3/16	2 - 1/16	1/4	0.706
485D	3/4"	3 - 3/4	2 - 7/16	3/8	0.913
485E	1"	4	2 - 5/8	3/8	1.130
485F	1.1/4"	5	3 - 3/8	3/4	2.025
485G	1.1/2"	5 - 3/4	3 - 7/8	3/4	2.835
485H	2"	7	4 - 3/4	1	4.725
485I	2.1/2"	9 - 1/4	5 - 7/8	1.1/2	8.775
485J	3"	10	6	1.1/2	11.970





ALUMINIUM PIPE WELDING ALIGNMENT CLAMP

Special design light weight, Aluminium pipe welding alignment clamp is easy to use to align two pipe before welding and its light weight pressure die cast strong body ensure for the correct alignment for carbon steel, stainless steel and duplex, super duplex and titanium pipes.

P-477



Prod. No.	477A	477B	477C
Size (Inch.)	1 - 2 1/2	2 - 6	6 - 14
Size (mm)	27 - 64	60 - 168	168 - 355
Wt. (Kgs.)	0.750	2.600	7.500

STEEL PIPE WELDING ALIGNMENT CLAMP

Special design forged carbon steel pipe welding alignment clamp is easy to use to align two pipe before welding and its strong forged ensure for the correct alignment for carbon steel, stainless steel and duplex, super duplex and titanium pipes. We provide Stainless sleeves on extra cost on request.

P-478



Prod. No.	478A	478B	478C	478D	478E
Size (Inch.)	1 - 3	2 - 5	4 - 7	5 - 9	10 - 14
Size (mm)	26 - 76	51 - 127	102 - 177	127 - 228	254 - 355
Wt. (Kgs.)	1.500	3.100	3.300	6.900	8.800

SINGLE CHAIN PIPE WELDING ALIGNMENT CLAMP FOR MEDIUM WALL (STANDARD)

Single chain pipe welding alignment clamp for Medium wall are used to align two pipe before welding and its strong carbon steel structure hold the pipe firmly and align easily for carbon steel, stainless steel and duplex, super duplex and titanium pipes.

P-481



Medium Wall

Prod. No.	481A	481B	481C	481D	481E	481F	481G
Size (Inch.)	8 - 12	8 - 16	8 - 20	8 - 24	8 - 28	8 - 32	8 - 36
No. of Jack Bar	6	7	9	11	13	14	18
Wt. (Kgs.)	9.300	10.500	12.900	15.300	17.700	18.800	21.200
Prod. No.	481H	481I	481J	481K	481L	481M	
Size (Inch.)	8 - 40	8 - 44	8 - 48	8 - 52	8 - 56	8 - 60	
No. of Jack Bar	18	19	21	23	25	26	
Wt. (Kgs.)	23.800	24.800	27.200	29.500	31.900	33.100	

SINGLE CHAIN PIPE WELDING ALIGNMENT CLAMP FOR HEAVY WALL (STANDARD)

Single chain pipe welding alignment clamp for Heavy wall are used to align two pipe before welding and its strong carbon steel structure hold the pipe firmly and align easily for carbon steel, stainless steel and duplex, super duplex and titanium pipes.

P-483



Heavy Wall

Prod. No.	483A	483B	483C	483D	483E	483F
Size (Inch.)	12 - 16	12 - 20	12 - 24	12 - 28	12 - 32	12 - 36
No. of Jack Bar	5	6	7	9	10	11
Wt. (Kgs.)	17.800	20.500	23.200	28.500	31.200	33.800
Prod. No.	483G	483H	483I	483J	483K	483L
Size (Inch.)	12 - 40	12 - 44	12 - 48	12 - 52	12 - 56	12 - 60
No. of Jack Bar	12	13	15	16	17	18
Wt. (Kgs.)	36.500	48.200	57.100	60.700	67.200	69.800

DOUBLE CHAIN PIPE WELDING ALIGNMENT CLAMP FOR MEDIUM WALL (STANDARD)

Double chain pipe welding alignment clamp for Medium wall are used to align two pipe before welding and its strong carbon steel structure hold the pipe firmly and align easily for carbon steel, stainless steel and duplex, super duplex and titanium pipes.

P-482



Medium Wall

Prod. No.	482A	482B	482C	482D	482E	482F	482G
Size (Inch.)	8 - 12	8 - 16	8 - 20	8 - 24	8 - 28	8 - 32	8 - 36
No. of Jack Bar	6	7	9	11	13	14	18
Wt. (Kgs.)	18.600	20.100	23.100	26.100	29.100	30.600	33.600
Prod. No.	482H	482I	482J	482K	482L	482M	
Size (Inch.)	8 - 40	8 - 44	8 - 48	8 - 52	8 - 56	8 - 60	
No. of Jack Bar	18	19	21	23	25	26	
Wt. (Kgs.)	36.600	38.100	41.200	44.200	47.200	48.700	

DOUBLE CHAIN PIPE WELDING ALIGNMENT CLAMP FOR HEAVY WALL (STANDARD)

Double chain pipe welding alignment clamp for Heavy wall are used to align two pipe before welding and its strong carbon steel structure hold the pipe firmly and align easily for carbon steel, stainless steel and duplex, super duplex and titanium pipes.

P-484



Heavy Wall

Prod. No.	484A	484B	484C	484D	484E	484F
Size (Inch.)	12 - 16	12 - 20	12 - 24	12 - 28	12 - 32	12 - 36
No. of Jack Bar	5	6	7	9	10	11
Wt. (Kgs.)	39.400	43.100	46.700	53.900	57.600	61.200
Prod. No.	484G	484H	484I	484J	484K	484L
Size (Inch.)	12 - 40	12 - 44	12 - 48	12 - 52	12 - 56	12 - 60
No. of Jack Bar	12	13	15	16	17	18
Wt. (Kgs.)	64.800	68.500	75.700	79.400	82.900	86.600



HYDRAULIC UNDER PRESSURE DRILLING MACHINE AUTO FEEDING WITH POWER PACK

Hydraulic operated auto feeding Under Pressure Drilling Machine is used for drilling to take branch connections from Large Diameter Cast Iron, Ductile Iron and Mild Steel pipes, trepanning vessels and blank flanges while under pressure.

OPERATION

The first operation is to mount a welded steel flange or cast iron tee on the main to drilled and pressure it carries. Place the valve for stopping-off operation or permanent for a branch connection. A combination of cup drill and center drill is used to cut the piece or coupon from the pipe. Spring loaded balls on the center drill expand beneath the coupon after drilling and cutting. The drill shaft is retracted and the coupon brought back the cutting portion with the drill head, tight the valve and machine can be removed.



P-232

Prod. No.	232A	232B	232C	232D	232E
Size (mm)	100(4")	150(6")	200(8")	250(10")	300(12")
Wt. (Kgs.)	275.000	325.000	375.000	425.000	475.000

ENGINEERING RATCHET (Heavy Duty)

It is used for tapping and drilling on pipe but mostly used in railway.

P-227



Prod. No.	227A	227B	227C	227D
Size (Inch.)	12(1/4 - 3/4)	14(1/4 - 1)	16(1-1.1/2)	18(1-2)
Wt. (Kgs.)	2.700	3.000	3.150	3.300

RATCHET DRILL MACHINE MULTIPURPOSE or Tapping & Drilling Machine (Complete Set)

INDIA'S first Tapping & Drilling Machine manufactured with latest & advance technology. It is a multipurpose machine so it can complete the Job of Drilling & Threading simultaneously on Cast Iron Pipe, Ductile Iron Pipe, M.S. Pipes & remaining sleeves for Drilling in Girder, Channel & Pole etc.

P-226



Prod. No.
Capacity

226A
Gripping capacity upto 300 mm (O.D.) C.I. & Steel Pipes. Bore Capacity 8mm to 50 mm for Pipe, Girder, Channel etc.
24.000



226B
For Square Shank Tap & drill only without steel box.
17.500

UNDER PRESSURE DRILLING AND TAPPING MACHINE

It is used to Drill and Tap in water line while under pressure. It makes the hole and tap up to 2" in Single Operation without electricity. It covers the range size 4" to 48" of Cast Iron, Ductile Iron and M.S. Pipes. Its superior quality seals stop the water pressure while drilling. It is packed in Metal Box.

P-230



Prod. No.

Prod. No.	230A	230B	230C	230D	230E	230F
Bore Capacity (Inch.)	1/2 - 1 1/4	1/2 - 2	1/2 - 2	1/2 - 2	1/2 - 2	1/2 - 2
Gripping Capacity (Inch.)	4 - 8	4 - 12	12 - 20	24 - 36	36 - 48	4 - 72
Wt. (Kgs.)	22.250	23.250	26.350	31.500	35.500	50.000



ENGINEERING REVERSABLE RATCHET

Multipurpose Reversible Ratchet is used with stand for drilling and tapping on pipes and remaining sleeves for drilling in girder, channel and pole etc.

P-229



Prod. No.
Size (mm)



229
With Three Sleeves, Tapper Square Shankes
Boring Capacity upto 50 mm
4.570

Wt. (Kgs.)

COMBINED TAP DRILL

Special designed tap drill bores into the pipe easy and back portion on the same hole portion immediately after drilling without unlock the machine. These combined tap drills are available in Die Steel and H.S.S steel both.

P-228



FOR TAPPING AND DRILLING MACHINE

Prod. No.	228A	228B	228C	228D	228E	228F	228G	228H
Size (Inch.)	1/4	3/8	1/2	3/4	1	1 1/4	1 1/2	2
Wt. (Kgs.)	0.180	0.190	0.200	0.350	0.700	0.950	1.200	1.970

P-331



FOR UNDER PRESSURE DRILLING AND TAPPING MACHINE

Prod. No.	331A	331B	331C	331D	331E	331F
Size (Inch.)	1/4	3/4	1	1 1/4	1 1/2	2
Wt. (Kgs.)	0.300	0.350	0.700	0.950	1.200	1.970

ONLINE UNDER PRESSURE DRILLING AND TAPPING MACHINE

"INDER-SINCE 1958" Under pressure Drilling and Tapping machine is used to Drill and Tap in running water line while under pressure. It make the hole and tap upto 2" in Single operation without electricity. Machine is recommended for connection ferrules to drinking water mains for connection to consumer without stopping water line. It is unique design and involves engineering challenges so that it is capable of Drilling and Tapping on Cast Iron, Ductile Iron, Steel and Asbestos cement pipes of various diameters and inserting ferrules directly in to the wall of water main or through a saddles strap where these may fitted to support the ferrule.

It is hand operated, easily maintained and highly durable to ensure simple installation of service valve to the main pipe and provide a quick, permanent and leak free service connection via conventional swivel ferrule service valve with or without service saddle and best feature is for whole tapping operation to be carried out without interrupting the supply through the main being tapped and it is also capable for dry tapping of the aforesaid mains. All model are packed in robust lock up case with a necessary range of tools and accessories with operations operational Manual.

Specifications : -It is suitable for max. Diameter 72" with tapping range Size 1/2" - 2" available in two models, its material of Feed screw, Drill Spindle, Ferrule Spindle are as per IS:1570 (Part II), 1979 or BS 970 Pat 1 ISO 683/1 and material for Ferrule and Machine body shall be of SG Iron IS:1865:1996 or BS 2789 Grade 420/12 (ISO 1083), Material of Rotating Table shall be Spun Cast Iron BS 1452 (ISO/R185) or IS:210-1978 or IS:1865:1996 and Fixing Chain IS:1072:1996 or ISO:4347:1992 with max. High Tensile Steel strength 49600N Breaking load or min. 400 kgs. and all "O" rings and Rubbers shall be of Nitrile Rubber with BS 2494 type W and spindle buffer shall be of Nitrile EP or EPDM rubber in accordance with BS type W and recommended Stainless Steel Bearing with ASNI 420.

P-2301



Prod. No.

Prod. No.	2301A	2301B
Bore Cap. (Inch.)	1/4 - 1 1/4	1/2 - 2
Wt. (Kgs.)	23.000	85.000

PORTABLE PIPE WELDING ALIGNMENT CLAMP

Famous design Ductile Iron casted pipe welding alignment clamp is easy to use to align two pipe before welding and its strong forged ensure for the correct alignment for carbon steel, stainless steel and duplex, super duplex and titanium pipes. We provide Stainless sleeves on extra cost on request.

P-489



Prod. No.	489A	489B	489C	489D
Size (mm)	1 - 2	2.1/2 - 4	5 - 8	9 - 12
Size (mm)	34 - 61	76 - 114	140 - 216	242 - 3
Wt. (Kgs.)	1.400	3.200	5.600	8.800

CAGE PIPE WELDING ALIGNMENT CLAMP

Heavy duty manual operated Cage Pipe Welding Alignment Clamps are used to align two pipe before welding and its strong carbon steel structure hold the pipe firmly and align easily for carbon steel, stainless steel and duplex, super duplex and titanium pipes. We also supply with Ratchet on extra cost on request.

P-480



Prod. No.	480A	480B	480C	480D	480E	480F	480G	480H	480I
Size (Inch.)	2	3	3.1/2	4	5	6	8	10	12
Size (mm)	51	76	89	102	127	152	203	254	305
Wt. (Kgs.)	4.000	7.000	8.000	9.000	15.000	15.000	15.000	19.200	25.400
Prod. No.	480J	480K	480L	480M	480N	480O	480P	480Q	480R
Size (Inch.)	14	18	18	20	22	24	26	28	30
Size (mm)	358	406	457	508	559	610	660	711	762
Wt. (Kgs.)	29.900	43.500	47.300	53.000	56.000	58.000	62.000	72.000	88.000
Prod. No.	480S	480T	480U	480V	480W	480X	480Y	480Z	480ZA
Size (Inch.)	32	34	36	38	40	42	48	54	60
Size (mm)	812	864	914	965	1016	1067	1219	1372	1524
Wt. (Kgs.)	93.000	97.000	103.000	108.000	119.000	127.000	153.000	159.000	171.000

UNIVERSAL SCREW CAM CLAMP

Universal Screw Cam Clamp for lifting of a large variety of different shaped steel, ranging from steel plates and structured steel to curved and spherical shaped steels.

P-488



Prod. No.	488A	488B	488C	488D
Capacity (Ton)	0.5	1.5	3.0	6.0
Jaw Opening (mm)	0 ~ 28	0 ~ 32	0 ~ 50	0 ~ 75
Wt. (Kgs.)	0.800	4.000	6.000	18.000

PIPE CUTTING DEVICE

Unique design hand held compact Pipe cutting device is used cut pipe in correct alignment with the help of guide.

P-486

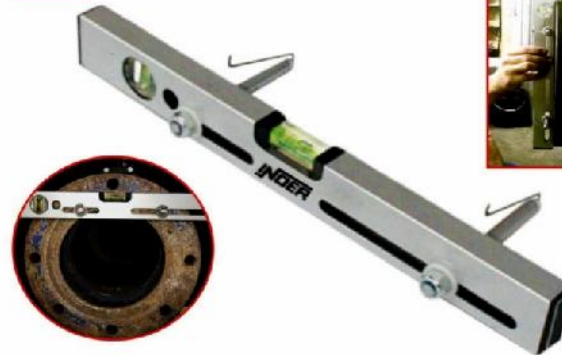


Prod. No.	486A	486B	486C
Size (mm)	12 - 30	25 - 50	40 - 100
Wt. (Kgs.)	0.750	3.150	10.100

PRECISION FLANGE TWO HOLE LEVELER

Precision Flange two hole leveler is used for flanges with adjustable of Two Hole Level is quick to accommodate the level and the distance between flange holes. The level can be used for checking the horizontal and vertical level of the flange. The spring loaded legs are inserted into the flange holes and the flange is rotated until the two Bubble Levels indicate a level position. The Spring Loaded Legs can be used on Flange hole sizes 16mm - 32mm.

P-487



Prod. No.	487A
Size (mm)	400
Wt. (Kgs.)	0.180

HIGH/LOW PIPE ALIGNMENT GAUGE

High/Low pipe alignment gauge is used to check inside High/Low pipe alignment quickly and accurately.

P-479



Prod. No.	479A
Size (mm)	40
Wt. (Kgs.)	0.038





HANDY CLEANER (35 MM)

It is used to clear drain size 19 to 35 mm lines up to 15/4.5 Mtrs. Length. Light Weight Aluminium Sheet body. Works through traps and bends in sinks, tubs, lavatories, urinals, vent pipe etc. Totally enclosed cable container.



P-20
Prod. No. 20A
Size (mm) 19 - 35 (15/4.5mtrs. length)
Wt. (Kgs.) 3.145

ECONOMY TOILET AUGER

Economy auger operates in Basins, Drains & Toilet up to 6ft.



P-24
Prod. No. 24A
Size (Ft.) 6
Wt. (Kgs.) 4.520

ROD PIPE CLEANER

It is used by sewerman to clean the sewerage blockage and it is adjustable and can increase the length to attach rod with assembly to any length.



P-22
Prod. No. 22A 22B 22C
Size (mm/Mtrs.) 8 x 1 8 x 1.5 8 x 2
Wt. (Kgs.) 1.560 1.760 1.960

MALLET HAMMER SOFT HEAD

Soft head Mallet Hammer with tubular steel handle.



P-85
Prod. No. 85A 85B 85C 85D 85E
(Dia in mm) 20 25 30 40 50
Wt. (Kgs.) 0.280 0.365 0.640 0.900 1.140

TOOL BOX CABINETS

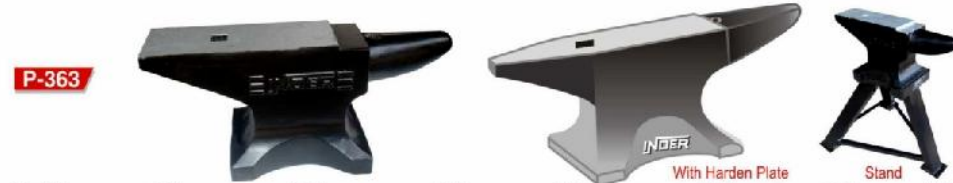
Manufacturing of tool box cabinets with a qualified team of engineers and vast knowledge, experience in marketing and administration the company made rapid development and expanded its activity to introduce wide range of product. With the trademark of "INDER" & we are giving services as custom tailor make tool boxes.



P-367
Prod. No. 367A 367B 367C 367D 367E 367F 367G 367H
Size (mm) 17x8x4 17x8x6 17x8x8 21x8x6 21x8x8 13x8x6 13x8x8 24x8x8
Compartment 1 3 5 3 5 3 5 5
Wt. (Kgs.) 2.100 3.050 4.100 3.600 4.800 2.700 3.600 5.500

ANVIL

"INDER" Traditional Anvil is designed by BIS many year ago for black smithy. It is designed from high strength shock resistance cast steel from from low holes and weak structure. "INDER" is only the company in the world who have capacity to produce wide range of sizes and weight upto 500 Kgs. As internationally required and but in India we introduce upto 150 Kgs. We have in scope to use hardened and tempered plates fixed on the surface of anvils which help to do heavy work on that. We provide Anvil in Powder coating and Stoving paints both and it depend on weight of the Anvil.



P-363
Prod. No. 363A 363B 363C 363D 363E 363F 363G
Wt. (Kgs.) 0.500 1.000 5.000 10.000 15.000 20.000 25.000
Prod. No. 363H 363I 363J 363K 363L 363M
Wt. (Kgs.) 30.000 40.000 50.000 75.000 100.000 150.000

PIPE PULLER TAP

It is used to pull the broken pipe from the underground upto 4" I.D.



P-87
Prod. No. 87A 87B
Size (Inch.) 1 1/4 - 2 2 - 4
Wt. (Kgs.) 2.000 5.000



DOUBLE OPEN VALVE WHEEL WRENCH

Special design Double open Valve wheel wrenches are used to provide leverage on hand operated valve wheels, permits a smooth snap Hammer action to make opening and closing valves easily without slippage when working in overhead or crowded position.



P-906

Prod. No.	906A	906B	906C
Size Length (Inch.)	8	10	17.1/2
Size Opening (Inch.)	1/2 x 21/32	11/16 x 1	1 x 1.5/16
Wt. (Kgs.)	0.450	0.700	2.000

F-TYPE VALVE WHEEL WRENCH

Special design F-Type Valve wheel wrenches is used to provide leverage on hand operated valve wheels, permits a smooth snap Hammer action to make opening and closing valves easily without slippage when working in overhead or crowded position.



P-909

Prod. No.	909A	909B	909C	909D
Size Length (Inch.)	12	17.3/8	26.5/8	35.1/8
Size Opening (Inch.)	1.3/8	1.3/8	1.5/8	1.3/4
Wt. (Kgs.)	1.150	1.400	3.100	4.500

SURGRIP SINGLE OPEN VALVE WHEEL WRENCH

Surgrip Single valve wheel wrench made of ductile iron wrenches are safer and easier to use because the head design provides a better grip and allows the operator to rest the wrench on top of the wheel when opening stubborn valves.



P-919

Prod. No.	919A	919B	919C
Size Length (Inch.)	22	27	27
Size Opening (Inch.)	1	1.5/16	2
Wt. (Kgs.)	1.800	2.530	5.400

SINGLE OPEN VALVE WHEEL WRENCH

Special design Single open Valve wheel wrenches are used to provide leverage on hand operated valve wheels, permits a smooth snap Hammer action to make opening and closing valves easily without slippage when working in overhead or crowded position.



P-907

Prod. No.	907A	907B	907C	907D
Size Length (Inch.)	15	15.1/2	27	48
Size Opening (Inch.)	1	1.3/8	2	2.1/4
Wt. (Kgs.)	1.100	1.150	3.600	6.000

ALUMINIUM VALVE WHEEL WRENCH

Light weight Valve wheel wrenches made from Aluminium-Magnesium to reduce the chance of sparks when opening stubborn valves. A comfortable rounded gripping area, and the overall smooth finish of the wrench are features that add to the high standard of quality.



P-917

Prod. No.	917A	917B	917C
Size Length (Inch.)	13.5/8	17.5/8	25.1/2
Size Opening (Inch.)	1.3/8	1.3/4	2.1/2
Wt. (Kgs.)	0.955	1.575	3.500

COMBINATION PIPE WRENCH VALVE WHEEL WRENCH

Combination Pipe wrench valve wheel wrench made of ductile iron with forged jaws designed for multiple uses in the refining, petrochemical, and gas precessing industries for safer and easier to use.



P-749

Prod. No.	749A	749B	749C	749D
Size Length (Inch.)	10	10	10	10
Pipe Capacity (Inch.)	1/8 - 1	1/8 - 1.1/2	1/8 - 1	1/8 - 1.1/2
Size Opening (Inch.)	3/4	1/2	3/4	1/2
Type	Wrench	Wrench	Surgrip	Surgrip
Wt. (Kgs.)	0.850	0.900	0.920	0.970

CLAW TYPE VALVE WHEEL WRENCH

Special design Claw type Valve wheel wrenches is used to provide leverage on hand operated valve wheels, permits a smooth snap Hammer action to make opening and closing valves easily without slippage when working in overhead or crowded position.



P-908

Prod. No.	908A
Size Length (Inch.)	21.3/8
Size Opening (Inch.)	1.3/8 X 1 1/2
Wt. (Kgs.)	1.500

SURGRIP DOUBLE OPEN VALVE WHEEL WRENCH

Surgrip Double valve wheel wrench made of ductile iron wrenches are safer and easier to use because the head design provides a better grip and allows the operator to rest the wrench on top of the wheel when opening stubborn valves.



P-918

Prod. No.	918A	918B	918C	918D
Size Length (Inch.)	8	10	15	22
Size Opening (Inch.)	1/2 x 21/32	11/16 x 1	1/2 x 21/32	1 x 1.5/16
Wt. (Kgs.)	0.450	0.675	0.620	2.080

SUPER CLAW TYPE VALVE WHEEL WRENCH

Special design Super Claw type Valve wheel wrenches is used to provide leverage on hand operated valve wheels, permits a smooth snap Hammer action to make opening and closing valves easily without slippage when working in overhead or crowded position.



P-750

Prod. No.	750A	750B	750C	750D	750E	750F	750G
Valve Size (Inch.)	1/2 - 1	1 - 2	3 - 4	6 - 8	10 - 14	16 - 20	22 - 24
Wt. (Kgs.)	0.260	0.540	0.630	1.100	1.300	2.200	2.400



TRY SQUARE (Carbon Steel Blade)

Try square medium is made of Carbon steel blade with cast iron stock for carpentry use. It can measure 45° and 90° angles.

P-123

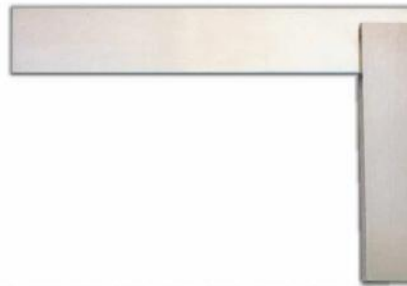


Prod. No.	123A	123B	123C	123D	123E	123F	123G	123H
Size (Inch.)	6	8	10	12	14	16	18	24
Wt. (Kgs.)	0.175	0.225	0.250	0.300	0.380	0.460	0.570	0.850

ENGINEERING SQUARE

Workshop grade Squares are manufactured to close tolerances in high grade steel. Both blade and stock are ground and polished with the blade being hardened and tempered.

P-146



Prod. No.	146A	146B	146C	146D	146E	146F	146G	146H	146I	146J	146K	146L
Size (Inch.)	2	2½	3	4	6	8	10	12	15	18	24	36
Wt. (Kgs.)	0.070	0.080	0.084	0.100	0.225	0.480	0.900	1.115	2.100	3.110	3.845	3.600

MASON SQUARE WITHOUT BASE

Square is made of straight strip. Measuring for right angle. Fully powder coated with marking of size. Normally it is used at Construction.

P-152



Prod. No.	152A	152B	152C	152D	152E	152F	152G	152H	152I	152J	152K
Size (mm)	100	150	200	250	300	400	500	600	700	800	1000
Wt. (Kgs.)	0.150	0.250	0.350	0.450	0.550	0.700	0.800	1.000	1.200	1.300	1.500

MASON SQUARE WITH BASE

Square with Base is a special square and it is for measurement of Right Angle. Its fantastic Base™ use for measuring the wall angle. Rust proof fully Powder coated square is used at Construction.

P-153

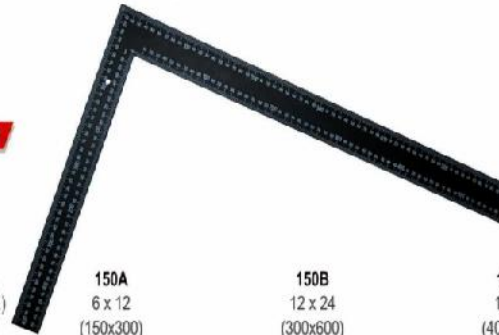


Prod. No.	153A	153B	153C	153D	153E	153F	153G	153H	153I	153J	153K
Size (mm)	100	150	200	250	300	400	500	600	700	800	1000
Wt. (Kgs.)	0.300	0.400	0.500	0.600	0.700	0.900	1.100	1.200	1.600	1.900	2.200

TAILOR SQUARE (Both Side)

Tailor Square is also known as Rafter Square. Fully powder coated right angle having excellent pad printing on both side in inches and mm graduation.

P-150



Prod. No.	150A	150B	150C
Size (Inch.)	6 x 12	12 x 24	16x24
Size (mm)	(150x300)	(300x600)	(400x600)
Wt. (Kgs.)	0.350	0.700	0.850

BEVEL SQUARE (Iron & Aluminium)

This Bevel Square is available with Cast Iron and Aluminium stock and Blade is finished by Nickel or Black. Its improved locking device for setting in different angles.

P-192



Prod. No.	192A	192B	192C	192D
Size (Inch.)	6	8	10	12
Wt. (Kgs.) Iron	0.195	0.200	0.245	0.270
Wt. (Kgs.) Alm.	0.110	0.120	0.140	0.145